

FRIDAY

FLEECES/LAMB WOOL

SECTION 21A - BLACK AND COLOURED

PRIZES: First \$5; Second \$2, Third H.M.

Entry Fee: \$4

All fleeces must be presented by 10 am on Friday, 3rd November, for judging.

- 2127 FINE WOOL FLEECE, 58's and finer.
 2128 MEDIUM WOOL FLEECE, 50's to 56's.
 2129 STRONG WOOL FLEECE, 44's to 46's.
 2130 RUG WOOL FLEECE, 40's and stronger.
 2131 VARIEGATED FLEECE, any count.

All fleeces will be judged on the following points:

Fleece weight.....	15
Handle	15
Length	10
Character	10
Soundness	10
Evenness	10
Density	5
Colour	5
Cleanliness & Spinnability	20
Total.....	100

SECTION 21C - LAMBS WOOL COMPETITION

Entry fee: \$4

Prizes: First \$5, Second \$2, Third H.M.

- 2144 Fine Merino Lamb's Wool, 70's.
 2145 Medium Merino Lamb's Wool, 64's.
 2146 Strong Merino Lamb's Wool, 60's.
 2147 Polwarth Lamb's Wool, 60's-58's.
 2148 Fine Crossbred Lamb's Wool, 56's.
 2149 Medium Crossbred Lamb's Wool, 50's.
 2150 Crossbred Lamb's Wool, 46's and lower.
 2151 Down's Lambs Wool.
 2152 Hoggets Wool, to be over 70mm

LAMBSWOOL CHAMPION AWARDS:

(SASHES DONATED BY THE COLAC & DISTRICT P. & A. SOCIETY)

WILL BE AWARDED TO:

- Champion Merino Lamb's Wool, irrespective of count
- Champion Polwarth Lamb's Wool, irrespective of count
- Champion Crossbred Lamb's Wool, irrespective of count
- SUPREME CHAMPION LAMBSWOOL

(to be taken from above championships).

No championship award need be made, if in the opinion of the Chief Judge/Steward, the standard does not warrant a championship being awarded.

SECTION 21B - SKIRTED FLEECE COMPETITION

PRIZES: First \$5; Second \$2, Third H.M.

Entry Fee: \$4

All fleeces must be presented by 10 am on Friday, November 4th for judging.

- 2132 Skirted fleece of fine Merino Ram's wool, 70's and finer.
 2133 Skirted fleece of fine Merino Ewe or Wether's wool, 70's and finer.
 2134 Skirted fleece of medium Merino Ram's wool, less than 64's.
 2135 Skirted fleece of medium Merino Ewe or Wether's wool, less than 64's.
 2136 Skirted fleece of Polwarth Ram's wool, 60's-58's.
 2137 Skirted fleece of Polwarth Ewe or Wether's wool, 60's-58's.
 2138 Skirted fleece of Fine Crossbred Wool, 28's and finer.
 2139 Skirted fleece of Medium Crossbred Wool, 28's to 32's.
 2140 Skirted fleece of Courser Crossbred Wool, 32's and courser.
 2141 Skirted fleece of Crossbred Ram's wool any count.
 2142 Skirted fleece of Down's Wool.
 2143 Skirted fleece of Misc English Breeds.

FLEECE CHAMPIONSHIP AWARDS:

Sashes donated by Colac & District P. & A. Society will be awarded to the following –

- Champion Merino Ram Fleece, irrespective of count.
- Champion Merino Ewe or Wether Fleece, irrespective of count.
- Champion Polwarth Fleece, irrespective of count.
- Champion Crossbred Fleece, irrespective of count.

SUPREME CHAMPION FLEECE OF THE SHOW (to be taken from the above Championships). Trophy and Sash for Supreme Fleece donated by **BARWON & YARRA VALLEY WOOL BROKERS & BUYERS. WINCHELSEA.**

No championship award need be made, if in the opinion of the Chief Judge/Steward, the standard does not warrant a championship being awarded. Trophy for Fleece to be presented at the completion of sheep judging on Saturday.

ALPACCA

For all classes/forms please contact

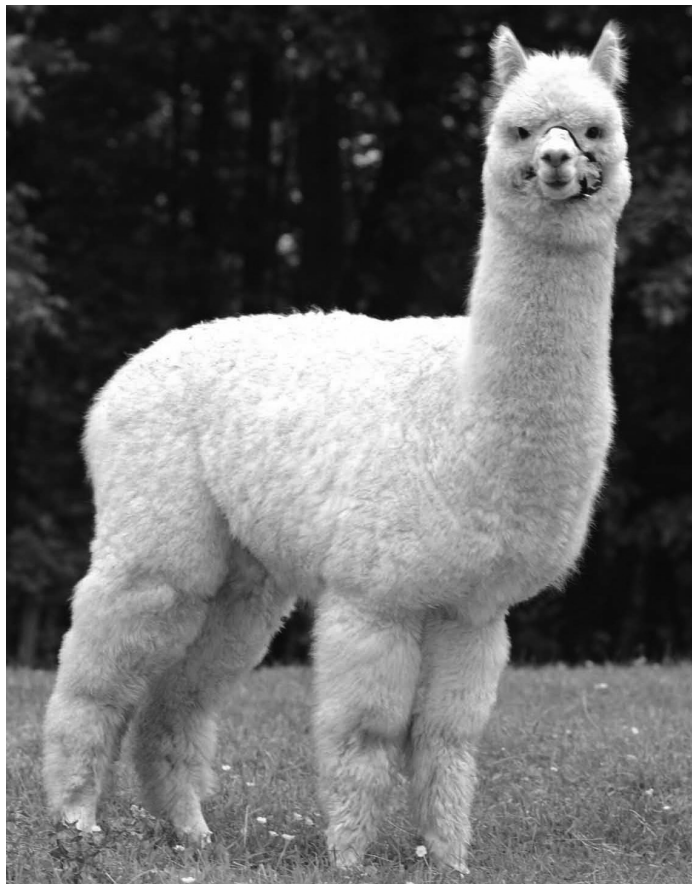
Darren & Claire Balboni

otwayorchard@activ8.neu.au

Phone (03) 5235 8474

Alpacas are to be shown in the Sheep Pavilion at this year's Colac Show.

Come and talk to the alpaca breeders and view these beautiful animals!



SATURDAY

SHEEP

SHEEP COMMITTEE

HEAD STEWARD: Mr Hugh Riches – Phone 0417 530 844

COMMITTEE: Graeme Smith, Jean Smith, Janice Riches, Wendy Dennis, John Smith, George McKay, Greg Potter, John Martin, Jodie Martin, Rachael Martin.

ENTRIES CLOSE THURSDAY 29TH OCTOBER 2017
ENTRY FORM PAGE 24

JUDGING COMMENCES: 10 am on Saturday, 4th November.
Exhibits must be penned at 9.30 am on Saturday, 4th November.

CONDITIONS

- **JOHNE'S DISEASE:** Sheep Health Status Declaration must be completed and photocopy submitted with Show entries. Original must be produced on demand at our Show.
- A** Exhibitors must provide fodder and feed containers.
- B** All sheep must be free from ticks, lice or their eggs. Any sheep found infested will be removed from grounds.
- C** Entries in British Breed Classes are restricted to animals bred in a registered flock and exhibited by members of the Australian Society of Breeders of British Sheep.
- D** All British Breed Sheep, Drysdale and Polled Dorsets entered in shorn classes must be evenly shorn on or after July 1, 2014. Lambs must be shown in the wool, unless otherwise stated and dropped after April 1st.
- E** Border Leicesters – Exhibitors are not to use any powders or substances on the face and/or color on legs and feet in the preparation of sheep for showing.
- F** OVINE BRUCELLOSIS: All ram exhibits, over 6 months of age, must be from an accredited flock or have a current veterinary certificate providing negative to both manual examination and blood test. Photocopy of a current Brucellosis Accreditation Certificate must accompany entry.

SECTION 19 - STUD SHEEP

ALL CLASSES SHORN EXCEPT WHERE STATED

PRIZES: First \$5; Second \$2; Third H.M.

Entry Fee: \$4

37c in entry fee goes to Public Liability Insurance which gives cover from the time the animal enters the Showground until they leave, but does not include transit cover.

CHAMPION RAM AND CHAMPION EWE IN EACH CLASS – Sash

MOST SUCCESSFUL EXHIBITOR IN EACH BREED – Sash

SUPREME CHAMPION SHEEP OF THE SHOW – Trophy and Sash
donated by CHARLES STEWART & CO.

INTERBREED CLASS 1902 – Trophy *donated by R. & S. DUNCOMBE*

SECTION 19 - SHEEP CLASSES

SECTION 19:

19 - A	Aussiedown	19 - RL	Ryeland
19 - B	Border Leister	19 - SD	Southdown
19 - H	Hampshire Down	19 - S	Suffolk
19 - PD	Poll Dorset	19 - T	Texel
19 - R	Romney	19 - WS	White Suffolk
19 - P	Polwarth		
19 - SS	Suffolk South (<i>all sheep in all classes to be shorn on or after 1st August</i>)		
19 - I	Interbreed (<i>Can only enter classes 1902, 1905 & 1906</i>)		

1901 RAM, over 1.5yrs.
1902 RAM, under 1.5yrs.
1903 RAM LAMB.

CHAMPION RAM

1904 PAIR RAMS, under 1.5yrs.
1905 EWE, over 1.5yrs.
1906 EWE, under 1.5yrs.

CHAMPION EWE

1907 EWE LAMB.
1908 PAIR EWES, under 1.5yrs.
1909 GROUP: 1 RAM & 2 EWES under 1.5yrs, bred by exhibitor.
1910 EWE, any age with Lamb at foot
(not to come from other classes).

MOST SUCCESSFUL EXHIBITOR - sash

SUNDAY

GOATS

SECTION 22 - DAIRY GOATS

ENTRIES CLOSE THURSDAY 18TH OCTOBER 2018

with the secretary, PO BOX 260, Colac 3250
ENTRY FORM PAGE 30

JUDGING COMMENCES: 10.30 am on Saturday, 3rd November.
All Goats must be penned by 10 am.

PRIZES: First \$5; Second \$2; Third H.M.

Entry Fee: \$4

RULES:

1. All goats must be registered in the DGSA herd book or appedices thereof.
2. Exhibitors must wear white on the showing.
3. "Any Breed" means any registered breed based on the constitution of the DGSA.
4. Animals entered in classes marked thus "*" must also enter in their appropriate Breed Class.
5. Figures for Type & Production Classes to be gained in the last 2 years (3 years for herd recording). Figures must be forwarded with the entries and cards must be presented on the day.
6. Copy of current C.A.E. & Johne's Certificates must accompany entries and be available for inspection on the day - all animals must have negative status (kids may be covered under their dam's certificate)
7. All senior does are to be presented for udder assessment in the appropriate best udder class; goats will then be milked out and reassessed. Only does actually entered in the best udder classes will then remain in the ring for award presentations.

CLASS 1* Best Udder - 1st lactation

CLASS 2* Best Udder - 2 or more lactations

BEST UDDER OVERALL

CLASS 3* Veteran doe in milk (7 years at the date of the show)

CLASS 4 Saanen Doe in milk.

CLASS 5 Toggenburg Doe in milk.

CLASS 6 British Alpine Doe in milk.

CLASS 7 Anglo Nubian Doe in milk.

CLASS 8* Type & Production Q* - 1st lactation

CLASS 9* Type & Production Q* - 2 or more lactations

OVERALL TYPE AND PRODUCTION Q*

CLASS 10* Type & Production - Herd Recording
CHAMPION AND RESERVE CHAMPION MILKING DOE
(from classes 3 to 6 inclusive).

CLASS 11 Saanen Goatling.

CLASS 12 Toggenburg Goatling.

CLASS 13 British Alpine Goatling.

CLASS 14 Anglo Nubian Goatling.

CHAMPION AND RESERVE CHAMPION GOATLING

CLASS 15 Saanen Doe Kid.

CLASS 16 Toggenburg Doe Kid.

CLASS 17 British Alpine Doe Kid.

CLASS 18 Anglo Nubian Doe Kid.

CHAMPION AND RESERVE CHAMPION DOE KID

CLASS 19 Buck Kid.

CLASS 20 Buckling.

CLASS 21 Buck.

CHAMPION AND RESERVE CHAMPION BUCK

CLASS 22* Doe in milk, Daughter dry.

CLASS 23* Two Does, Goatlings or Doe Kids, same sire, not full sisters

CLASS 24 Child Handler

BEST EXHIBIT

(from Champion Milking Doe, Champion Goatling, Champion Doe Kid and Champion Buck).